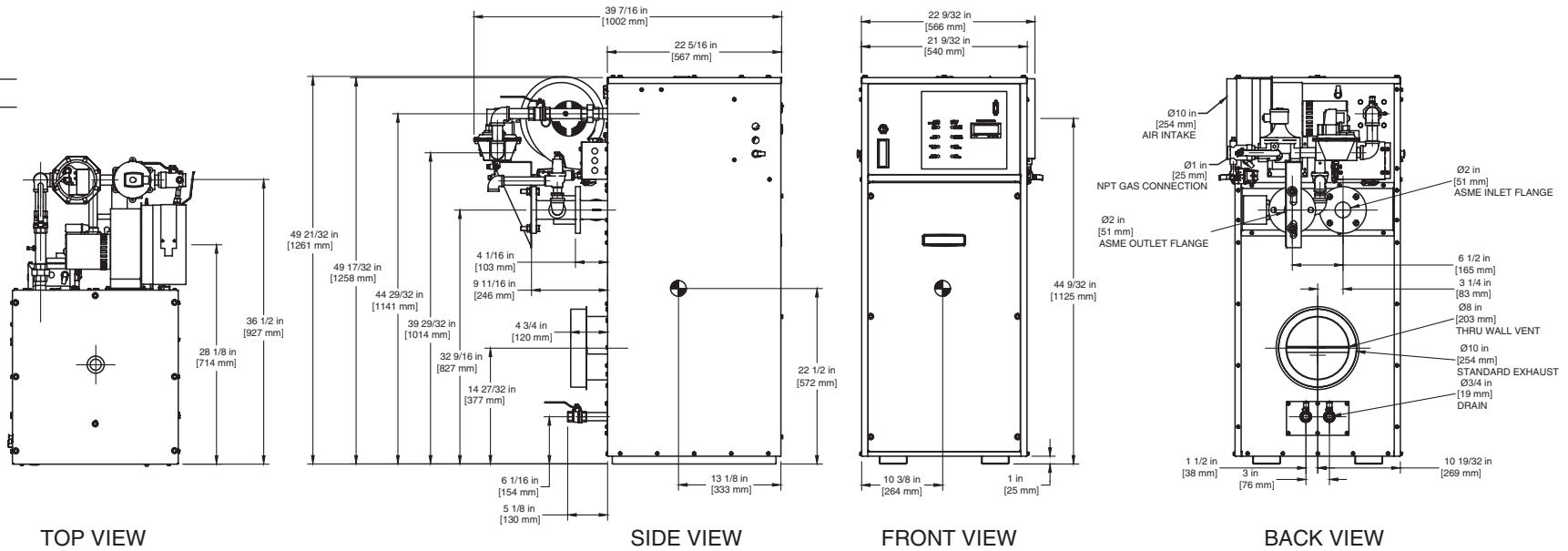


INDOOR UNIT

RSUB-65 REV D

CODE OPTIONS

CSD-1 Manual Reset LWCO



Notes:

1. Dimensions are approximate and should not be used to "rough-in" equipment.
2. Dimensions are subject to change without notice.

BOILER CERTIFIED RATINGS & CAPACITIES

Fuel Type	Natural/Propane Gas	Boiler FLA	5.3*
Input BTU/hr.	750,000 / 220 kW	Min. Gas Pressure Required	5"W.C.**
Output BTU/hr.	637,500 / 187 kW	Max. Gas Pressure Allowed	14"W.C.
Electrical Requirements	120 VAC / 1 ph / 60 hz	Operating Weight	468 lbs. / 212 kg.

BOILER TEMPERATURE RISE / PRESSURE DROP

20°F / 11.1°C				25°F / 13.9°C				30°F / 16.7°C				35°F / 19.4°C			
Flow Rate		Pressure Drop		Flow Rate		Pressure Drop		Flow Rate		Pressure Drop		Flow Rate		Pressure Drop	
GPM	L/s	Ft	kPa	GPM	L/s	Ft	kPa	GPM	L/s	Ft	kPa	GPM	L/s	Ft	kPa
63.8	4.0	1.57	4.6	51.0	3.2	1.04	3.1	42.5	2.7	0.70	2.2	36.4	2.3	0.60	1.6

BOILER / WATER HEATER TRIM & CONTROLS

Main Gas Valve	V4944B	Main Ball Valve	1"
Firing Valve	1"	Pilot Regulator	White-Rodgers 25M
Safety Valve	ASCO L8214G 1"	Air Switch	HUBA
Ignition Control	Honeywell RM7897C	Blower Motor	Fasco 1/4 hp - FLA 3.6
Operating Control (FB/FW)	Jumo	Relief Valve - FB	3/4" x 3/4" set @ 50 psi
High Limit	Honeywell L4008E	Relief Valve - FW	3/4" x 3/4" set @ 125 psi
		Flow Switch	TACO

WATER HEATER HOURLY RECOVERY CAPACITY (GPH & LPH)

40°F	22°C	60°F	33°C	80°F	44°C	100°F	56°C	120°F	67°C	140°F	78°C
1877	7096	1252	4731	939	3548	751	2838	626	2365	536	2027

Futera II 750 model water heater not available for sale in Canada due to NRCAN Regulations.

A.S.M.E.

ASME Sect IV Htg Surface	97.79 Sq. Ft. / 9.08 Sq. M.	Design Data	Max. 160 psig & 250°F
Water Volume	3.7 gal / 14.0 Liters		

* Add circulator amps.

** For incoming gas pressures lower than 5" W.C. natural or 11" W.C. propane, consult factory.

REP FIRM _____

SUBMITTED BY _____

JOB NAME _____

ARCHITECT _____

ENGINEER _____

CONTRACTOR _____

DATE _____

FUTERA II 750

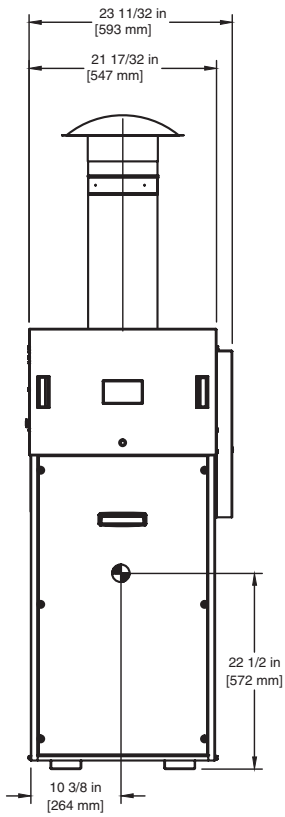
Category I or Category III Appliance

(see Installation and Operation Manual for venting information)

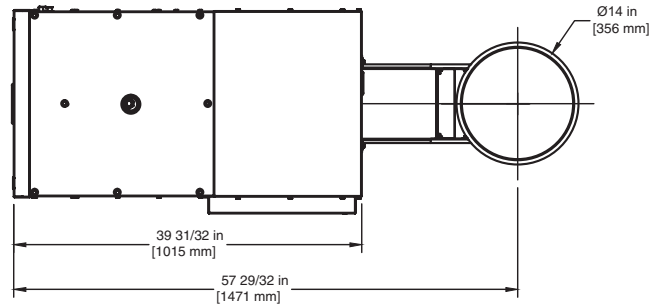


A Division of Mestek, Inc.
Westfield, MA 01085
(413) 568-9571

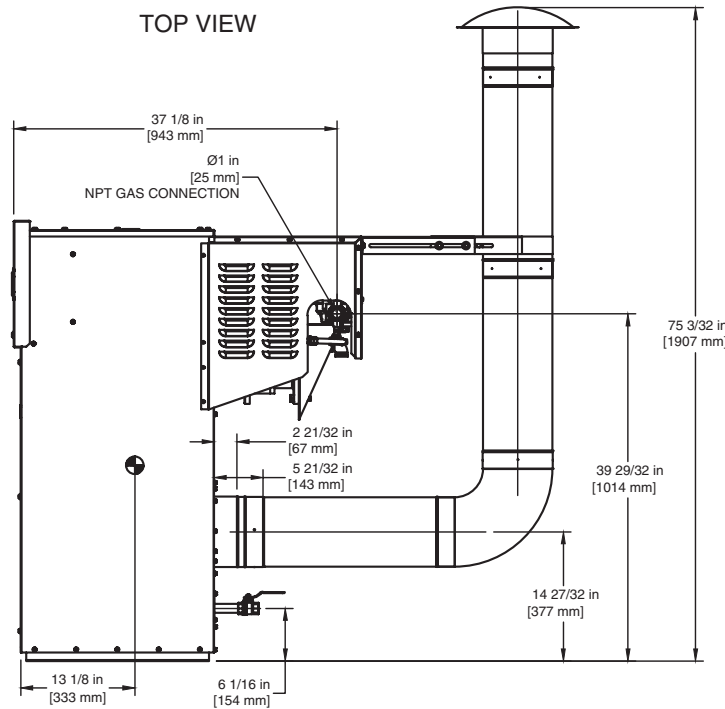
OUTDOOR UNIT



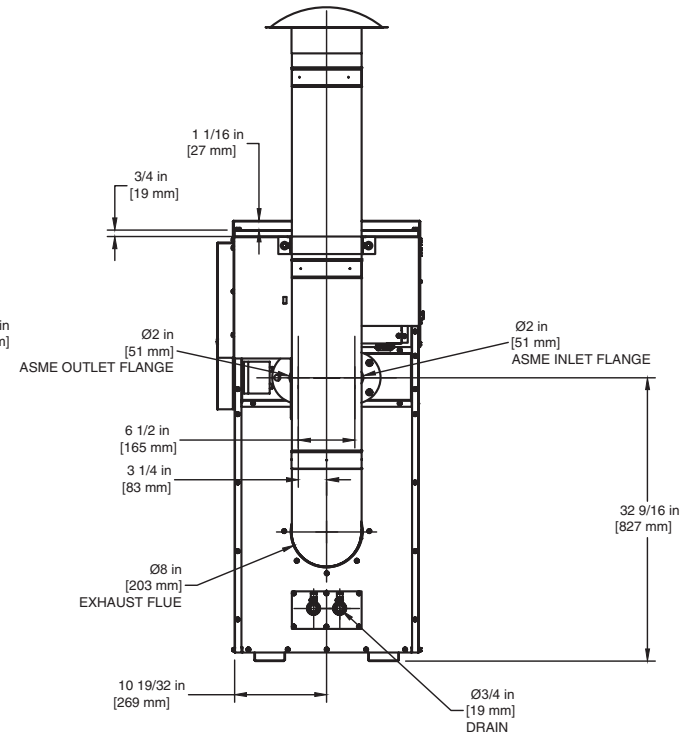
FRONT VIEW



TOP VIEW



SIDE VIEW



BACK VIEW

FUTERA II 750

- Notes:**
1. Dimensions are approximate and should not be used to "rough-in" equipment.
 2. Dimensions are subject to change without notice.